

INSTRUMENT APPROACH CHART - ICAO

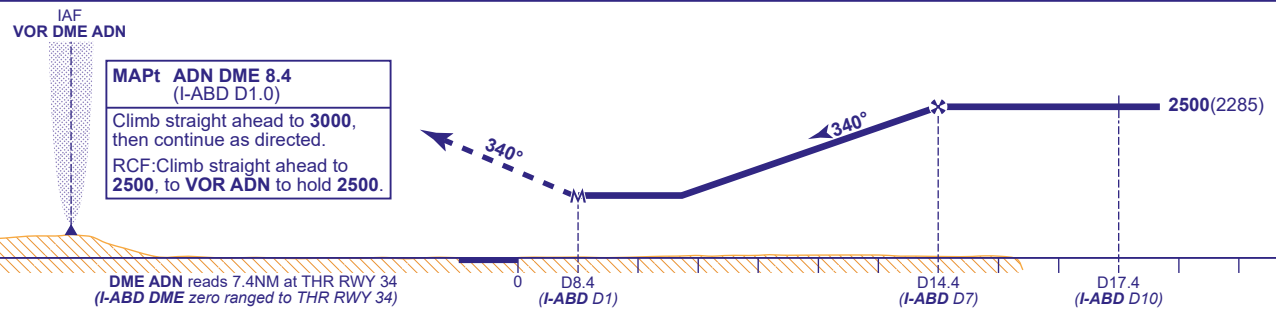
ABERDEEN/DYCE  
VOR DME  
RWY 34  
(ACFT CAT A,B,C,D)



APP 119.055	ABERDEEN APPROACH	AD ELEVATION	215
TWR 118.105	ABERDEEN TOWER	THR ELEVATION	215
121.705	ABERDEEN GROUND	OBSTACLE ELEVATION	2122 AMSL (1907) (ABOVE THR)
RAD 119.055, 128.305	ABERDEEN RADAR	TRANSITION ALTITUDE 6000	
ATIS 114.300 (VOR ADN)	ABERDEEN INFORMATION		
		BEARINGS ARE MAGNETIC	



RECOMMENDED PROFILE Gradient 5.25%, 319FT/NM				
ADN (I-ABD)	14(6.6)	13(5.6)	12(4.6)	11(3.6)
ALT(HGT)	2370(2155)	2050(1835)	1730(1515)	1410(1195)



Aircraft Category		A	B	C	D	Rate of descent	G/S KT	160	140	120	100	80
OCA (OCH)		WITH DME	1050(835)	1050(835)	1050(835)		FT/MIN	850	740	640	530	430
VM(C)OCA (OCH AAL)	Total Area	1130(915)	1320(1105)	1420(1205)	1420(1205)							
	East of RWY 16/34	720(505)	940(725)	1050(835)	1050(835)							

**ALTERNATIVE PROCEDURE BASE TURN REVERSAL**  
From VOR ADN fly outbound on QDR 155° (CAT A,B) or QDR 145° (CAT C,D) **not below 4000**. At ADN DME 12 descend to **not below 2500**. At ADN DME 17.4 (I-ABD D10) turn right to intercept FAT. When established continue as for main procedure.

**DIRECT ARRIVAL FROM AIRWAY P600** (not available without VOR DME ADN)  
Request clearance for direct approach before reaching GLESK. When cleared descend to **not below 4000** at ADN DME 26. At ADN DME 25, turn right onto nominal track 087° to intercept and follow ADN DME 20 ARC anticlockwise. After passing VOR ADN R200 descend to **not below 3200** (see plan).

- NOTES**
- FAT offset 1.8° west of RWY 34 C/L.
  - Note FAT passes 0.15NM west of DOWNI.
  - I-ABD DME and ADN DME not co-located. Ensure correct range cross check is used for the DME received.